



The Official Newsletter for The Capital City Beekeepers Association

In This Issue:

February’s Program with Dr. Tom Webster

Pg. 2

Bluegrass Bee School

Pg. 3

School’s Painted Bee Hive Auction Results

Pg. 4

ABF Honey Queen: A Bee-Friendly Cause

Pg. 5

CCBA February Minutes

Pg. 6&7

The ‘keeper’s Almanac

Pg.7

CCBA Treasurer’s Report


Pg.8

Upcoming Events

Pg.9

Above is an 18th century painted beehive panel from Slovenia portraying the hiving of a swarm (it is that time of year). “Slovenia is a homeland of beekeepers and apiculture.” It is also a homeland of the Carniolan (grey) bee (*Apis mellifera carnica*) that has many good traits. If you notice to the left is a depiction of how bees are traditionally kept in bee-houses there and similar panels were and still are painted today. [Read more...](#)

In jest, it seems the gentleman on the far left is making a video with his cellphone of those hiving the swarm.

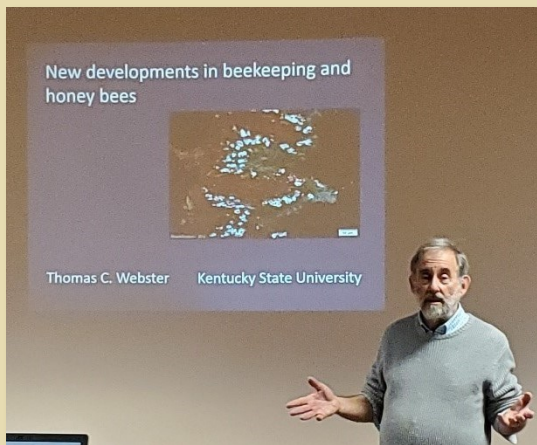

CORONAVIRUS

In cooperation with the precautions set forth, CCBA has cancelled our regularly meeting at the extension office. However, we will be conducting business and having discussion on our scheduled meeting night, March 24th, via conference call. Members were sent the dial-in credentials. Please note that the number is not toll free, however, with cellphones that shouldn't be an issue. -Wes Henry, CCBA President

CCBA FEBRUARY PROGRAM

SUBMITTED BY, JACK KUHN

Our group was fortunate to have Dr. Tom Webster of Kentucky State University as our guest speaker. Dr. Webster talked about several items of interest including First, a partnership with The Kentucky State Queen Breeders Association for the propagation of mite chewing queens and making them available to local beekeepers.



The group is sponsoring a 48-hour queen cell initiative whereas these cells are made available at a low cost for a beekeeper wanting to create a split or requeen a hive using a queen that is known to have genetics promoting mite-chewing behavior.

He also gave an update on the use and demand for the KSU Autoclave. He reported that the portable unit has paid for itself in the value of bee equipment that has been processed and treated through the unit. For those who may not know, the autoclave sterilizes woodenware and melts out all the wax from old, failed, or suspected diseased hive bodies and frames. Dr. Webster reported that operating at a lower temperature are being explored to be able to sterilize plastic equipment, i.e. plasticell. John Haney (J.J.) is the operator/manager of the unit.

Dr. Webster also explained that new treatment regimes are being produced on how beekeepers can protect extracted frames from wax moths using acetic acid or Bt (*Bacillus thuringiensis*). He concluded that it shows great promise at low cost withleaving no residue in the wax.

Dr. Webster concluded his presentation with a good overview of Nosema. According to his presentation, it seems that *Nosema apis*, the more prevalent Nosema disease in the past, has become less common in hives now. It can be present anytime, but is in higher numbers later fall and early spring. *Nosema ceranae*, seems to be more prevalent in hives now and occurs in late spring.

Nosema, a small microsporidian parasite that lives in the digestive tract of honeybees is common and can cause serious damage to adult honeybees thus reducing

the life span of individual bees and weakening or killing colonies. Infected nurse bees do not fully develop, and infected queens die off prematurely.

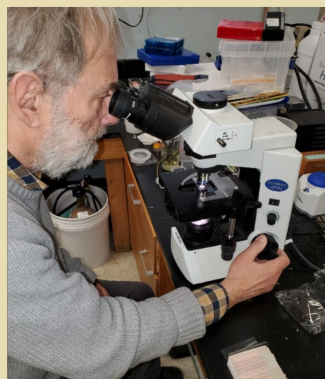
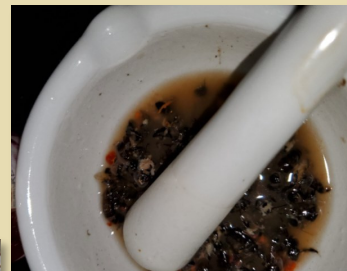
There are no specific symptoms of Nosema disease. Inability of bees to fly (they seem weak or lethargic), excreta (poop) on combs or landing boards, and dead or dying bees on the ground in front of the hive may be indications of Nosema infection, but they may also be caused by other disease.

Dr. Webster reported that KSU offers a free diagnostic test for Nosema. Beekeepers need but collect about 20 bees from the entrance, outside frames (frames left or right of the center where older bees are) and fix them in alcohol. They can be stored for a long period of time if stored in a clean, sealed container (empty medicine bottles with foam inner seal work great).

Jack Tests for Nosema

Member Jack Kuhn collected three samples in early March for test. He met Dr Webster at the KSU lab.

At right, Each bee sample was placed in a crucible and crushed. A small amount of liquid was then fixed on a slide.



Dr. Webster left, views the sample in a high-powered microscope with special filters. While we could see various pollen grains, there where no Nosema spores in any of the three samples.

Another sample of the same three hives is planned for early May 2020 to evaluate the presence of *Nosema ceranae*.

Bluegrass Bee School 2020

When registration ended, 210 folks were in attendance for this year's Bluegrass Bee School. With more than twenty instructors, there were sessions for first year and second year beekeepers, and beekeepers with many years experience. Even if you weren't a beekeeper but had an interest in the craft and it's products there



Keynote Clarence Collison speaks at opening session.

were sessions that easily would have pertained to you as well with break-outs on using beeswax for candle making, and soaps, planting for pollinators, label making, cooking with honey and making mead-honey wine. The

Keynote speaker, Clarence Collison had a break out of his own on examining combs and discerning what they tell us.

We were also again had the opportunity to have the 2020 American Beekeeping Federation Honey Queen (Mary Reisinger) with us. She made a presentation at the opening and had her own break-out session on cooking with honey. Her time with the school was a culmination of a week of presentations and interviews promoting the beekeeping and honey industry.

As in years past, the school was again a joint effort between CCBA & Bluegrass Beekeepers Association with additional sponsors KSBA and Kentucky State University with Dr. Thomas Webster spearheading

the use again of the facilities at Kentucky State University. Volunteers from both local bee organizations made it all work smooth and convenient. All sessions were all "under one roof" in Bradford Hall except for lunch which was catered in the student center.

One major change was with preregistration. Though you could still print out a paper form and mail it in with your fee, this was the first year that online registration was available and was met with good results.

Vendors such as Kelley Beekeeping, Dadant, Basberg Insurance, were also on site and contributed to the door prizes as well as individuals. There were a variety of equipment and tools as well as a package of



KSBA Mike Mabry speaking at Closing Session

bees. These were awarded at the closing session. KSBA President Mike Mabry also spoke at closing session.

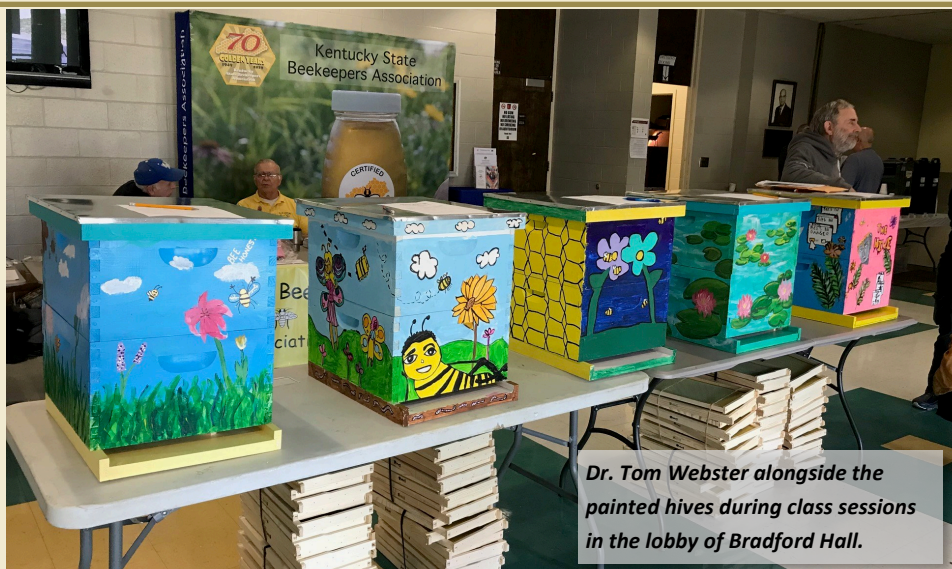


Opening session

A wrap up meeting is scheduled to evaluate the school. Although all the particulars and numbers are not available for this newsletter, we do know that the first indications are very favorable from the key note speaker to even lunch!

Bluegrass Bee School Hive Auction 2020

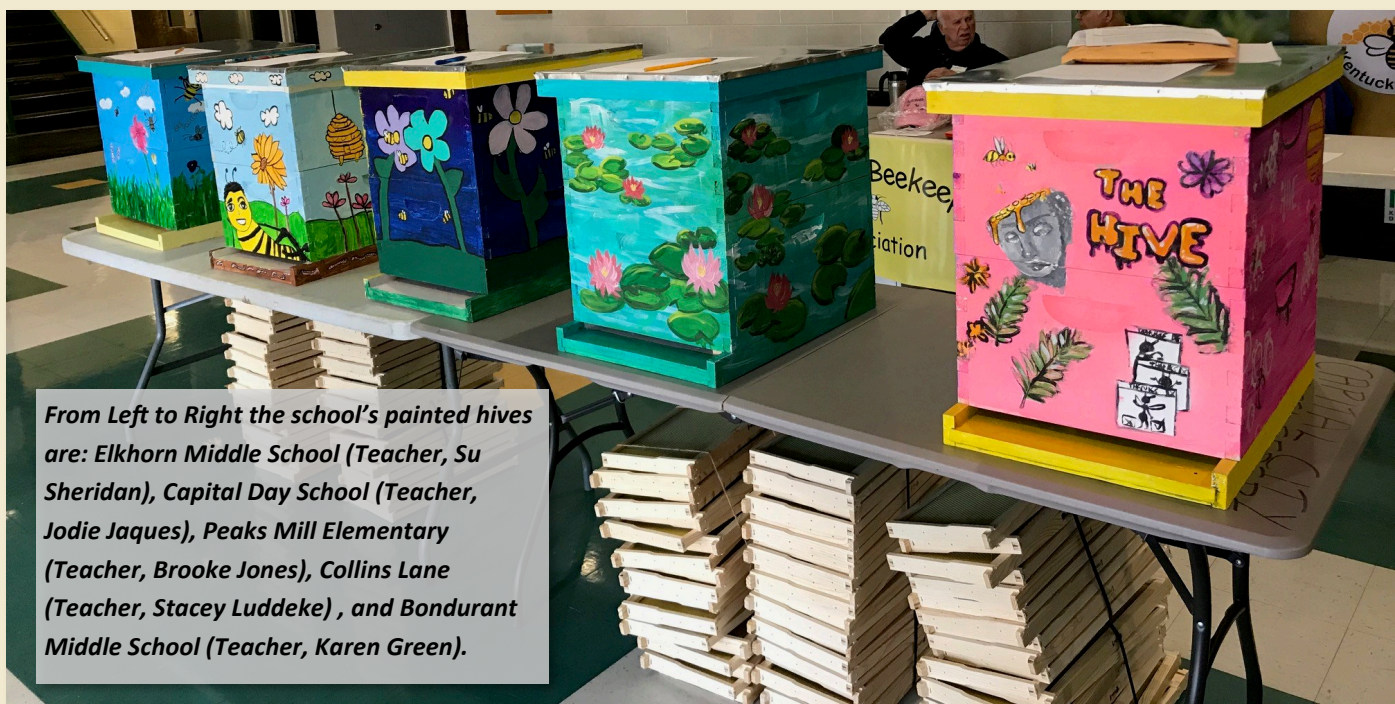
It all began in the latter part of 2019 when CCBA invited schools to participate in the Annual Beehive Painting and Silent Auction for the 2020 Bluegrass Bee School. Five



Dr. Tom Webster alongside the painted hives during class sessions in the lobby of Bradford Hall.

local schools answered the call and after a generous donation initiated by Manager Tasha Cummins, Dadant and Sons would again provide the woodenware to the cause. CCBA purchased the assembled frames for the deeps complete with plasticell foundation. These are working, albeit beautifully and creatively painted hives. The schools were right on schedule and had the hives completed the week before the school commenced and were wonderfully displayed after registration in the lobby of Bradford Hall at KSU. The bidding was made

between classes, during lunch- for the duration of the school- and ended at 3 p.m. with the winning bids announced at the closing session. The report from CCBA Treasurer George Fowler reads, *“The Bee School Hive auction brought in \$915.00. Deducting \$212.00 for frames, the net proceeds are \$703.00. At 40%, the club’s share is \$201.20; the schools’ share is 421.80.”* Though each school would receive about 84.00, divided equally, the members will vote to do as George suggests and “round up” to 90.00 each.



From Left to Right the school’s painted hives are: Elkhorn Middle School (Teacher, Su Sheridan), Capital Day School (Teacher, Jodie Jaques), Peaks Mill Elementary (Teacher, Brooke Jones), Collins Lane (Teacher, Stacey Luddeke), and Bondurant Middle School (Teacher, Karen Green).

As in year's past the American Beekeeping Federation has put the Bluegrass Bee School and Bee Friendly week (the week leading up to the School) on the schedule of that year's Honey Queen or Princess. This year was no exception, and thanks to the great efforts of CCBA Members John Antenucci and Janet Osborn, her schedule this year was again created and managed. 2020 ABF Honey Queen Mary Reisinger arrived Sunday, March 1st and "hit the ground running" early Monday morning with an [interview on Fox 56 Morning Edition](#). Her schedule included local students, WEKU, The governor's mansion, AG Comm. Ryan Quarles, and more; culminating with her presence and break-out session "Cooking with Honey" at the Bluegrass Bee school. The Friday night before The School, members of CCBA and Bluegrass Beekeepers joined her at Gibby's in Frankfort along with keynote speaker Clarence Collison and his wife Judy. Many other folks from CCBA and Bluegrass Beekeepers and others "pitched in" with transportation, housing, and meals to name just a few things. Thanks to all that made her visit an enormous success.

ABF 2020 Honey Queen, A Bee-Friendly Cause



First stop, with Bill Bryant and Andrea Walker. Click to see full interview.



Here Queen Mary meets with Home-schoolers age 2-5.



Above, Queen Mary speaks to Middle School Students at The Frankfort Christian Academy and Left, poses with students of Bondurant Middle School and their painted hive for the auction at the Bluegrass Bee School



Lunch and a meeting with the Governor mansion staff was one stop during the Bee-Friendly week for Queen Mary.

Meeting Minutes, February 25th, 2020

Meeting:

Program

Vice President Lynn Morris called the meeting to order at 6:10 p.m. because President Wes Henry was delayed due to work. Also running late was Dr. Tom Webster, the evening's speaker. While waiting the members discussed bees, hive management, feeding patties and reversing hive boxes.

Upon their arrivals, Wes introduced Dr. Webster who gave an interesting and informative presentation about *Nosema apis* and *Nosema ceranae*, deadly fungal organisms which infect honeybee colonies.

Business Meeting

The business meeting began with Wes requesting a motion to approve the minutes of the January meeting, as they appeared in our newsletter. Rickie Evans made the motion, Ken Daniels seconded, and the motion carried.

Treasurer George Fowler presented the financial report, stating that expenditures were made for the purchase of the remaining three T-shirts as well as the frames and foundations for the bee school hive auction. The motion to approve the financial report was made by Sarah Preston, seconded by Wayne Parrish, and approved by the membership.

Activity Reports:

Wes reported that the Native Bee Presentation on January 29th was well attended by CCBA members, including himself, George and Jack Kuhn. Information provided addressed competition for honeybees, sharing viruses and pathogens, the 'buzz pollination' of bumble bees, the endangered Rusty Patched Bumble Bee (*Bombus affinis*) and static electricity is what makes pollen cling to pollinators.

Swarm Report:

With swarm season approaching, Jan Rafert stated that he was updating the swarm catchers list for this year and will pass it on to those organizations which may receive swarm calls, including the Franklin County Extension Office, local emergency responders, tree services, etc.

Library Report:

George mentioned that we may have to limit the number of books that anyone may check out at one time, due to books not being returned in a timely manner.

Dues:

CCBA dues and dues for the KY State Beekeepers Assoc., whether for membership or for the Certified Kentucky Honey Program, are to be paid separately this year. George will collect the dues for CCBA and dues for KSBA are to be paid to Sarah Preston, CKHP manager.

Volunteer Door Prize Program:

Wes explained our new volunteer door prize program, wherein members will receive a ticket for each time that they volunteer for an association's event. Each ticket number will be 'placed in a hat' for prize drawings in June and October. The June prize is a complete double-deep hive. Upcoming volunteer events are Dadant's Package Day and for the Capital Area Extension Master Gardener's plant sale, both of which will be on April 25th.

Bluegrass Beekeeping School:

Registrations can be made via a flyer form and on-line.

A schedule of classes is available at bluegrassbeekeepers.com.

George, Ken, Jack and Marsha Bezold will pick up the painted hives for the auction from the participating schools.

We are still in need of three or four volunteers for the coffee table.

There will be a dinner with the school's keynote speaker, Dr. Clarence Collison, at Gibby's at 6:30 p.m.

The American Beekeeping Federation's Honey Queen will be attending the school and there will probably be a dinner with her Saturday evening after the bee school. John Antenucci said that there are still some gaps in the queen's schedule for people to help with her transportation and meals.

Meeting Minutes, February 25th, 2020, Cont.

Shirts:

There are still a few shirts available at \$15 each.

New Business:

Kentucky State Beekeepers Assoc. Spring Meeting:

The KSBA will have its spring meeting on the 27th & 28th of March in Elizabethtown. For further information see the posting and the newsletter.

KSBA will also have a presence at the Perryville Battlefield on July 25th.

From the Floor:

Jack announced that our March speaker will be Dr. Clare Rittschof, noted UK entomologist regarding how experiences and social interactions influence behavioral expression in honey bees.

Adjournment:

Following a motion to by Jack, seconded by George, the members voted to adjourn at 8:05 p.m.

Our next meeting will be on March 24th.

Respectfully submitted,

Jan W. Rafert

CCBA Secretary

The Keeper's Almanack

Beekeeper's "To Do"-

- ◆ Spring cleaning: scrape debris from Bottom Boards, remove any mouse damaged frames, replace repair old woodenware, etc.
- ◆ Swarm prevention: move empty hive bodys above brood, make splits/ divisions, add hive bodys to overwintered singles
- ◆ Check stores: feed 1/1 syrup to support brood "build up"
- ◆ Apply beetle traps: beetle blasters, unscented Swiffer sheets, squash every beetle you see.
- ◆ Have equipment ready for installing packages (April 25th at Dadant) and nucs
- ◆ Be ready to catch swarms: install swarm traps, have box and frames ready to catch swarms.
- ◆ Evaluate queens and requeen as necessary
- ◆ Have surplus honey supers ready to install on production hives by Tax Day, April 15th
–See *John Antenucci's beekeeping by the Holiday's calendar* ([see October 2017 newsletter](#))

CCBA - Treasurer's Report February 25, 2020 to March 24, 2020

General

Beginning Balance \$2388.10

Receipts

Dues - CCBA (6 Individual)	\$60.00	
Bumper Sticker	\$2.00	
Bee School Hive Auction	\$915.00	
Interest on Checking Acct.(2/29)	\$0.21	
Total Receipts		\$977.21

Expenditures

None

Total Expenditures \$00.00

Current Available Balance **\$3365.31**

Checking Account: \$3315.31

Cash change fund \$50.00

Notes:

1. Wilson's check for February = \$115.75 for 4 member/participants.
3. The treasurer maintains a \$50.00 cash change fund for use at meetings and events.
4. The Bee School Hive auction brought in \$915.00. Deducting \$212.00 for frames, the net proceeds are \$703.00. At 40%, the club's share is \$201.20; the schools' share is 421.80 (about \$84.00 per school. I suggest rounding the distribution to \$90 per school.

Educational Funds (Saving)

Beginning Balance		\$478.75
Receipts		
Interest on savings account (2/29)	\$0.06	
Total Receipts		\$.06
Total Expenditures		NONE
Ending Balance		\$478.81

Submitted By,
George Fowler
CCBA Treasurer

The Capital Bee Opportunities

Capital Area Extension Master Gardener

Plant Sale/ Education & Honey Booth- April 25th 9 am -2 pm

[Farm Bureau Pavilion](#)

[Lakeview Park](#)

[118 Park Avenue, Frankfort, KY](#)



Dadant Bee-Package Day- April 25th

[955 Chenault Rd., Frankfort KY](#)



CCBA Regular Scheduled Meeting

[Franklin County Extension Office](#)

[101 Lakeview Ct., Frankfort, KY](#)

Heartland Apiculture Society Annual Conference

July 6-8th

[University of Southern Indiana](#)

[Evansville, IN](#)

